

Massachusetts General Hospital Department of Pharmacy Pharmacy Residency Program



Welcome to Boston tip sheet
Updated: 3/2023

Table of Contents:

Licensing Information	3
a. Massachusetts Pharmacist Licensing	3
b. Obtaining an original Massachusetts license via exam	3
c. Obtaining an original Massachusetts license via score transfer*	3
d. Obtaining a Massachusetts license via reciprocity	3
e. Massachusetts MPJE	4
f. Massachusetts Intern Licensing	4
g. General Licensing Information	4
Transportation in the Boston Area	5
a. Massachusetts Bay Transport Authority (MBTA)	5
b. Parking in the City	6
c. Parking at MGH	7
d. Moving Day Parking	7
e. Biking	7
f. Car Sharing	9
g. Walking	9
Living in Boston	10
a. Utilities	10
b. Groceries	10
c. Renting in Boston	10
d. Finding an apartment	10
Diversity at MGH	15
Diversity in Boston	15
MGH Employee Perks	18



Licensing Information

a. Massachusetts Pharmacist Licensing

- **Per ASHP, you must be licensed within 90 days of the start of residency**
- Begin licensing process ASAP after the Match. The overall process, from application to obtaining licensure, may take 2 months or more
- Intern and pharmacist licenses can be verified online [here](#) and a hard copy of license will be mailed
- [Click here](#) for the licensing fee schedule

b. Obtaining an original Massachusetts license via exam

1. Submit an [application](#) to the Professional Credentialing Services (PCS)
 - a. Verification of graduation form cannot be submitted until you graduate from your College of Pharmacy
2. [Register for the MPJE and NAPLEX](#); select Massachusetts as a state where you want your test score sent
3. PCS will notify NABP that applicant is eligible to register for the NAPLEX and MPJE, and then NABP will send the applicant the authorization to test (ATT) so applicant can register for their exams
 - a. The time from application submission until receiving ATT may be weeks
4. Take and pass the NAPLEX and MPJE exams
 - a. Once you pass both the NAPLEX and MPJE, license processing may take up to 7-10 days
5. Full instructions here: <https://pcshq.com/?page=health,ubyexamu>

c. Obtaining an original Massachusetts license via score transfer*

(*score transfer is only an option if you passed your NAPLEX within the past 365 days)

1. [In the NABP portal](#), send your NAPLEX test score to the state of Massachusetts using the “score transfer” option
2. Submit an [application](#) to the Professional Credentialing Services (PCS), including a Verification of Graduation from your pharmacy school
3. [Use NABP](#) to submit a request to register for the MPJE
4. Once PCS clears the applicant to register for the MPJE, then NABP will send the applicant the authorization to test (ATT) so applicant can register for the MPJE
5. Take and pass the MPJE exam
 - Once you pass both the NAPLEX and MPJE, license processing may take up to 7-10 days
 - MPJE must be passed within 1 year of taking NAPLEX, otherwise a new application process and fees are required
6. Full instructions here: <https://pcshq.com/?page=health,ubyscoretransferu>

d. Obtaining a Massachusetts license via reciprocity

1. [In the NABP portal](#), request Transfer of pharmaceuticals licensure (TPL)
 - a. Applicant has 1 year from the TPL issue date to pass MPJE. Failure to pass MPJE within 1 year will require new application and fees
2. Submit a [reciprocity application](#), NABP-approved TPL, a copy of driver’s license/birth certificate, and fee to the PCS
3. PCS will notify NABP that applicant is eligible to register for MPJE, and then NABP will send the applicant the authorization to test (ATT) so applicant can register for the MPJE
4. Take and pass the MPJE exam
 - a. Once you pass both the NAPLEX and MPJE, license processing may take up to 7-10 days
 - b. MPJE must be passed within 1 year of taking NAPLEX, otherwise a new application process and fees are required



e. Massachusetts MPJE

1. The last few pages of the pharmacist license application contains a list of topics to review for the MPJE exam. These resources can be found online at or a printed copy of the laws can be purchased through the MA Board of Pharmacy (*If you order a printed copy, make sure to double check all of the resources with the list of topics provided in the license application!*)
2. Start studying early!
3. MSHP also offers Massachusetts law exam review webinars in summer of each year

f. Massachusetts Intern Licensing

- Per the residency contract, “if the Resident is **unable to obtain licensure as a pharmacist** in the state of Massachusetts by **the date specified in the residency contract**, the Resident **must be licensed as a pharmacy intern** in the state of Massachusetts by **the specified date**. Failure to obtain pharmacy intern licensure by the specified date will result in the Resident not being allowed to participate in any pharmacy-related activities (such as direct patient-care activities, medication handling and packaging etc.) until licensure is obtained.”
- **Start this process as soon as possible after you match!!**
- License fee is \$95
- MA Pharmacy Licensing is processed through Professional Credentialing Services (PCS)
- The MA Board of Pharmacy may be able to help answer some questions but all of your licensing paperwork will be sent to PCS
- This process can be slightly tedious as you have to get your college of pharmacy administrators signature and seal as well as get it notarized prior to sending it in to PCS
 - **Ignore Form C when completing the application**
 - You will need to also have a passport photo – recommended to get two photos taken at this time because you can use the other one for your pharmacist licenses
 - Walgreens, other convenience stores, and post-offices take passport pictures
 - Common places to get documents notarized: Banks, post-offices, schools, MGH notary in the security office
- <https://www.pcshq.com/?page=health,MA-pharmacyintern>

g. General Licensing Information

- NAPLEX
 - https://nabp.pharmacy/wp-content/uploads/2017/04/NAPLEX_MPJE_Bulletin_04-10-17.pdf
 - Check your scores
 - Log into NABP with your username (email) and password to check your NAPLEX and any other MPJE exams
 - MA does participate in online score posting!
 - Once your scores are posted, PCS will need to send your scores to the MA Board of Pharmacy. This process can take a few weeks so keep in contact with PCS for a timeline of when to expect your scores to be sent.

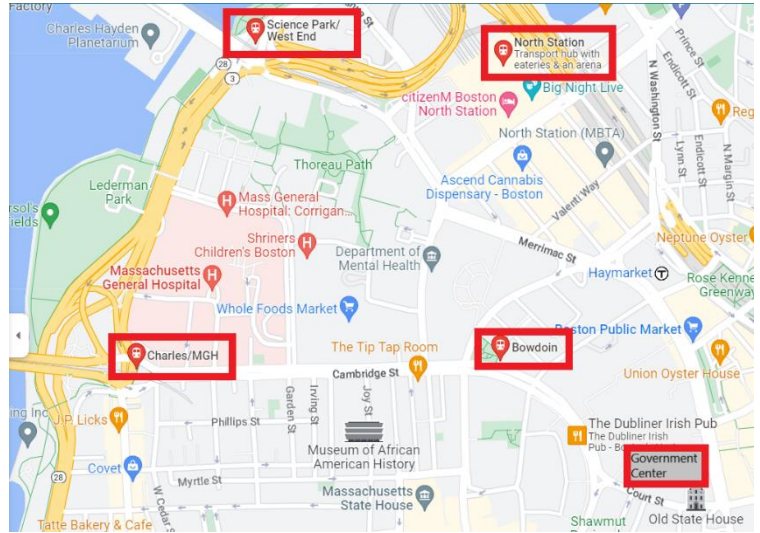


Transportation in the Boston Area

The easiest way to get to MGH is by public transportation- most of the pharmacy staff get to work by the train or walking

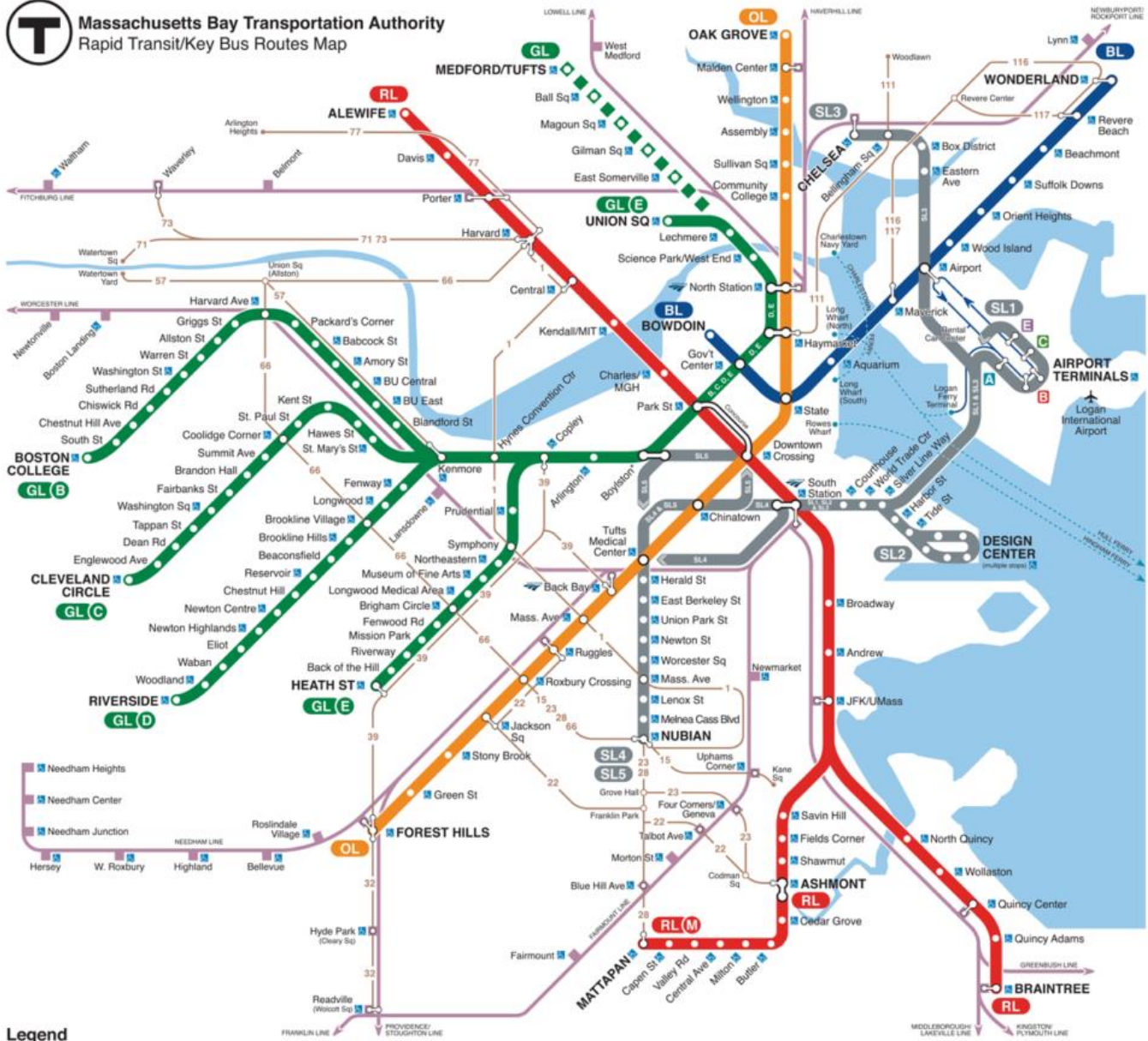
a. Massachusetts Bay Transport Authority (MBTA)

- The subway system in Boston is known as “the T”
 - The commuter rail is different from the T and can take you to areas further outside the city
- Website containing maps, and bus/train schedules: <http://mbta.com/>
- There are 5 T lines in Boston (red, green, orange, blue, and silver)
- The closest T stops to MGH are
 - Green line Science Park/West End: 7 minute walk
 - Green/Orange line/Commuter Rail North Station: 10 minute walk
 - Green line Government Center: 10 minute walk
 - Blue line Bowdoin: 8 minute walk
 - Red line Charles/MGH: 4 minute walk
 - Most of the trains run every 5-10 minutes during the week
- There are a couple helpful Apps to help you navigate the MBTA system and to help you get track of the time
 - ProximiT: free app that lists arrivals, departures, and delays for all systems and stops (most of use this app!)
 - Transit App: mimics the MBTA’s information and gives real-time data for arrivals and departures. This app can also give you real-time info for other modes of transport that are nearby and going to same direction you are traveling
 - Apple Maps, Google Maps, Uber, and Lyft will also show you the train schedule
 - Trans-Loc is the MGB shuttle schedule
- From the Boston Logan Airport, you can reach Boston by using a free airport shuttle to the Blue line or the Silver Line SL1 (leaving the airport, the Silver Line is free. Usual cost for going to the airport).
- **T passes**
 - A single T ride costs \$2.40 with a Charlie Card regardless of the number of stops you need to travel.
 - Your subway/bus pass is called a Charlie Card and can be used for either method of transportation; the commuter rail utilizes a different card (Link Pass)
 - Reloadable Charlie Cards can be found at North and South Station
 - As a resident at the MGH, you are eligible for employee monthly pass discounts for the subway (the T), commuter rail, and buses
 - Monthly T pass fees can be deducted monthly via your paycheck which you can set up/cancel at any time during the year
 - Current rate is \$45/month pre-tax through MGH, though this is subject to change yearly
 - You can sign up for a monthly pass on PeopleSoft and they will provide you with a Charlie Card





Massachusetts Bay Transportation Authority Rapid Transit/Key Bus Routes Map



Legend

RED LINE	SILVER LINE and branches	COMMUTER RAIL	Accessible station All MBTA and Massport bus and ferry services are accessible	Free Logan Airport shuttle bus		Customer Communications & Travel Info 617-222-3200, 800-392-6100, TTY 617-222-5146, www.mbta.com
MATTAPAN LINE	GREEN LINE and branches	KEY BUS ROUTE Frequent service	Rapid Transit transfer station	Amtrak service Back Bay, North & South Stations		MBTA Transit Police: 911 TTY 617-222-1200
ORANGE LINE	Terminates at Gov't Ctr	FERRY	Commuter Rail transfer station	Terminates at Union Sq		Elevator/escalator/lift updates: 800-392-6100
BLUE LINE	Terminates at Medford/Tufts	*Boylston: Accessible for Silver Line only		Terminates at Medford/Tufts		

© 2022 v.36A

Not to scale

b. Parking in the City

- Metered street parking
- Boston and the surrounding cities have free/low-cost street parking permits for their residents
 - To get a resident parking permit, you will need to switch your vehicle registration and license plate over to Massachusetts
 - <https://www.boston.gov/departments/parking-clerk/how-get-resident-parking-permit>



- Parking garages and lots are located throughout the city but these can be costly as they are priced by hourly use, especially if there are sporting events and concerts in the surrounding areas
 - Typical cost per day ~\$40

c. Parking at MGH

- Parking garages surrounding the hospital are reserved for patients or visitors
- Parking at MGH during the day is very hard, but you are able to park on the weekends and after 5 pm during weekdays for a one-time \$25 fee (available via MGH Commuter Services)
- There are non-MGH affiliated parking garages and lots near MGH but they can be costly as they are priced by hourly use, especially if there are sporting events and concerts in the surrounding areas
 - Typical cost per day ~\$40
- If you are planning to live outside of the city, some of the T stations have parking with fees for daily use but these often fill up quickly with other commuters lots (cannot use Charlie Card to pay for these)
- You can sign-up to be waitlisted for auxiliary parking lots associated with MGH that are a few miles off campus. Free shuttles bring you to and from campus to the lot. Cost and wait list times are variable, depending on parking lot, and monthly fee is paid via payroll deduction

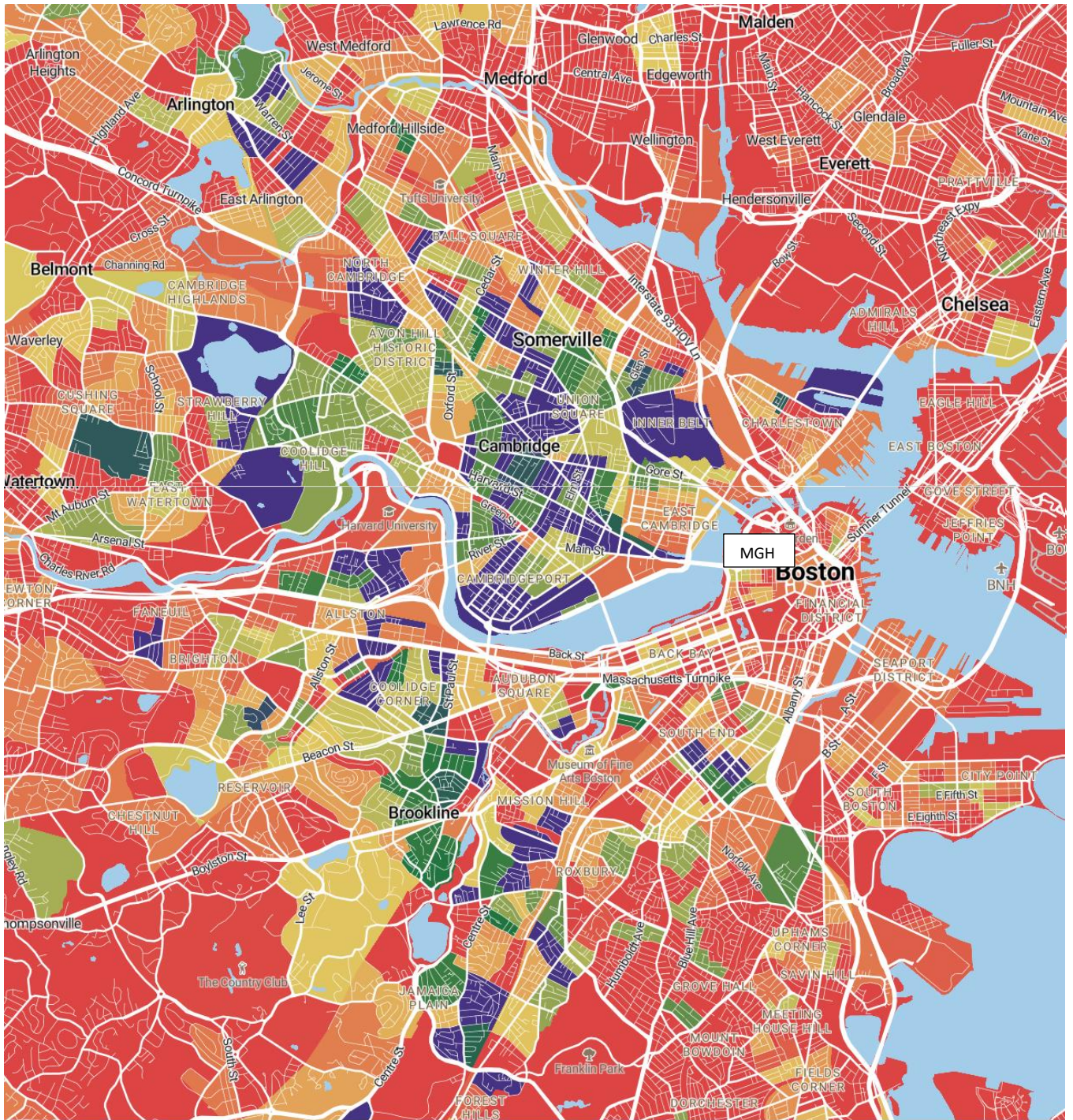
d. Moving Day Parking

- If you are moving into a building/apartment with no parking lot and will be using a moving truck, you may need a street parking pass. More information about parking day passes can be found here: <https://www.boston.gov/how-reserve-parking-spot-your-moving-truck>
- Your property manager or broker can help provide more information about your neighborhood's specifics

e. Biking

- Many places throughout the city have dedicated bike lanes
- Blue Bikes
 - Via MGH perks you can get a monthly subscription for \$60/year
- If you want to use your own bike, there is a bike cage with bike racks where you can lock your bike in front of the main hospital entrance and at the Charles River Plaza
 - Getting a MGH bike parking pass is a yearly \$10 fee
 - Bike parking pass can be obtained from the Commuters' Office in the Wang building





Bicycle-Friendly Key

© Mapbox © OpenStreetMap Improve this map

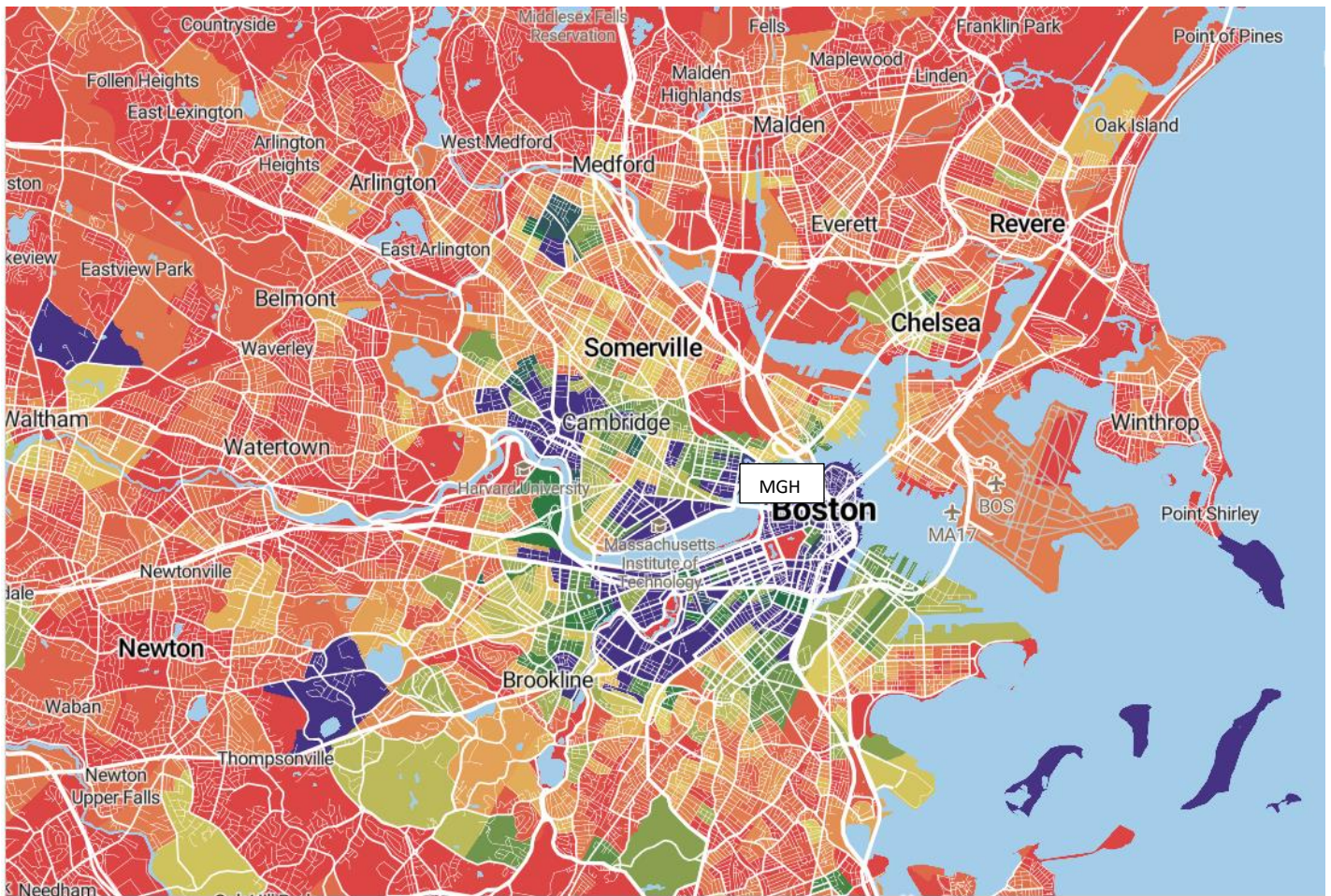


f. Car Sharing

- Zipcar: Discounted membership through MGH (\$35/year plus tax)
- Turo

g. Walking

- Boston is frequently listed as one of America's top 5 most walkable cities
- Neighborhoods that are within a 20 minute walk of MGH include:
 - Beacon Hill (<10 minute walk)
 - West End (<10 minute walk)
 - North End (<20 minute walk)
 - Downtown (<20 minute walk)
 - East Cambridge/Kendall Square (<20 minute walk)



Walkability Key

© Mapbox © OpenStreetMap Improve this map



Living in Boston

a. Utilities

- Electricity-Eversource/NStar
- Gas- National Grid
- Cable/Internet- Most apartments are wired for Xfinity Comcast
- Trash collection - free throughout Boston and surrounding cities (Cambridge, Somerville, Quincy)
 - City of Cambridge offers free curbside composting

b. Groceries - variable depending on where you live

- Within walking distance of the hospital
 - Whole Foods - services Beacon Hill and West End neighborhoods
 - Star Market – services West End and North end neighborhoods
 - Fresh produce outdoor farmer’s market on Fridays and Saturdays - Haymarket T station
- Grocery delivery is available throughout the city (Instacart, Amazon fresh, Uber and other apps)
- Many weekly farmer’s markets throughout the city (<https://www.boston.gov/departments/food-access/boston-farmers-markets>)

c. Renting in Boston

- MA Tenants Laws – your rights as a renter (<https://www.mass.gov/info-details/tenant-rights>)
 - During the winter, there is a minimum and maximum temperature that your landlord must keep the apartment
 - Landlords must return your security deposit + interest within 30 days of lease termination
- Most places require renters insurance (usually very cheap)
 - Options: Lemonade, Geico, State Farm
- Most apartments do not come with parking spots
 - If you do want to bring a car, its better usually to live outside downtown or look for an apartment with parking available
 - To register for street parking permits in Boston and surrounding cities, you will need to change your license and car registration to Massachusetts
- Be mindful of the street sweeping parking restrictions (may result in ticketing or towing if parked in sweeping zone during active sweeping hours)
- If you rent through a broker, they will often charge a “broker’s fee” equivalent to one month’s rent (see “d. Finding an apartment” below for tips on how to avoid paying a broker’s fee)
 - It is common upon signing a lease to be asked to pay first and last month of rent + security deposit + broker’s fee

d. Finding an apartment

- If you can’t see the apartment in person, ask to do a virtual tours of your apartment prior to leasing or a current residents may be able to go tour the apartment for you
- Ways to find an apartment:
 - Current residents
 - MGB Housing Website (<https://www.partners.org/Housing/>)
 - Zillow (call landlord directly)

 - Craigslist
 - Apartment Complex Websites
 - Facebook



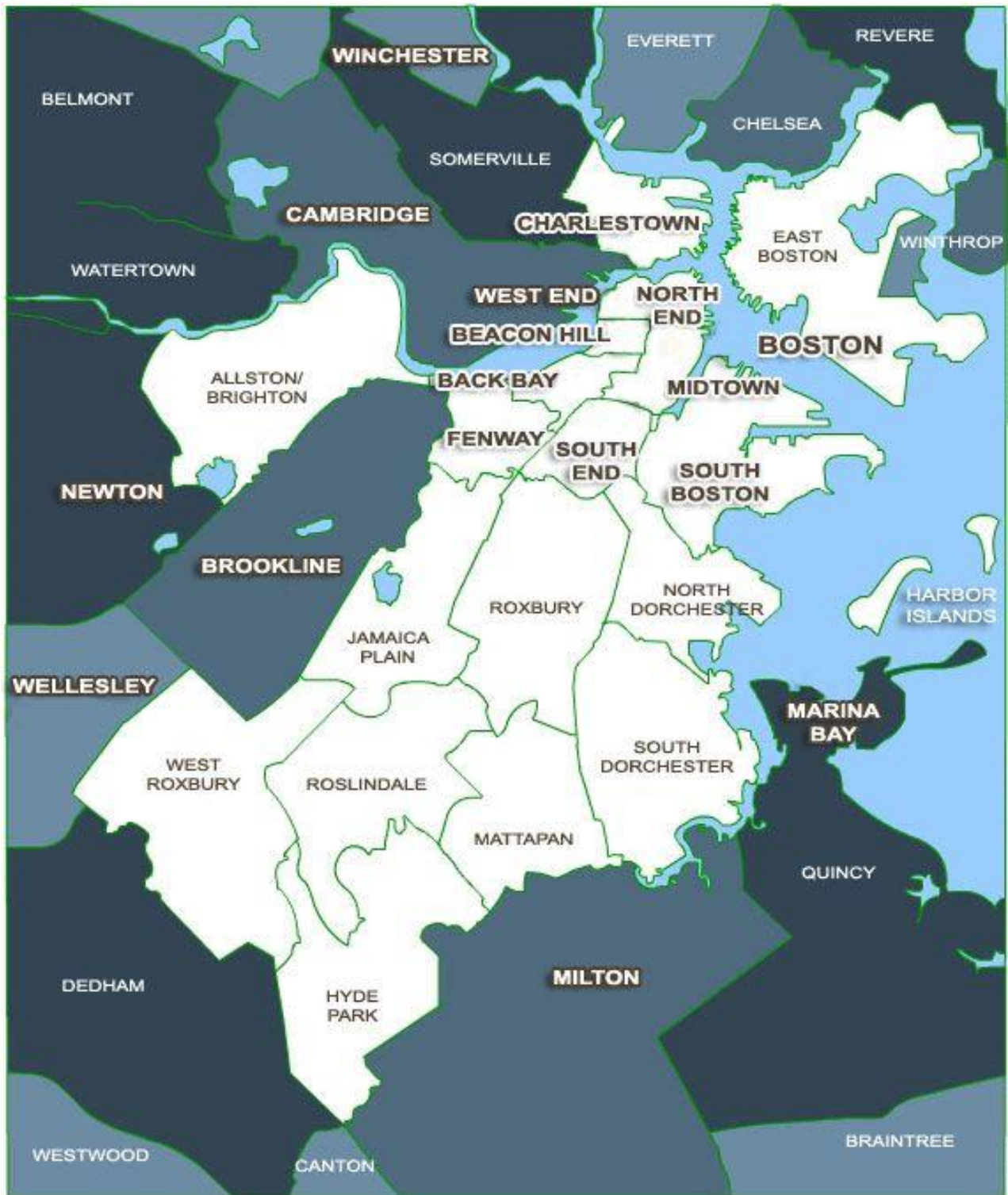
- Real Estate Brokers
 - Commonly used throughout the city and can be helpful
 - Beware that they often require a month's worth of rent as a **broker's fee**
 - Tips to avoid paying a broker's fee
 - When looking at listings, look for "no broker's fee" listings
 - Look for listings where people are looking for roommates for a place where they are already residing
 - Look for listings where the landlord pays part or all the broker's fee
 - Look for listings where the landlord is posting their property/room for rent directly
 - If looking at large apartment complexes, contact the complex directly rather than through a broker

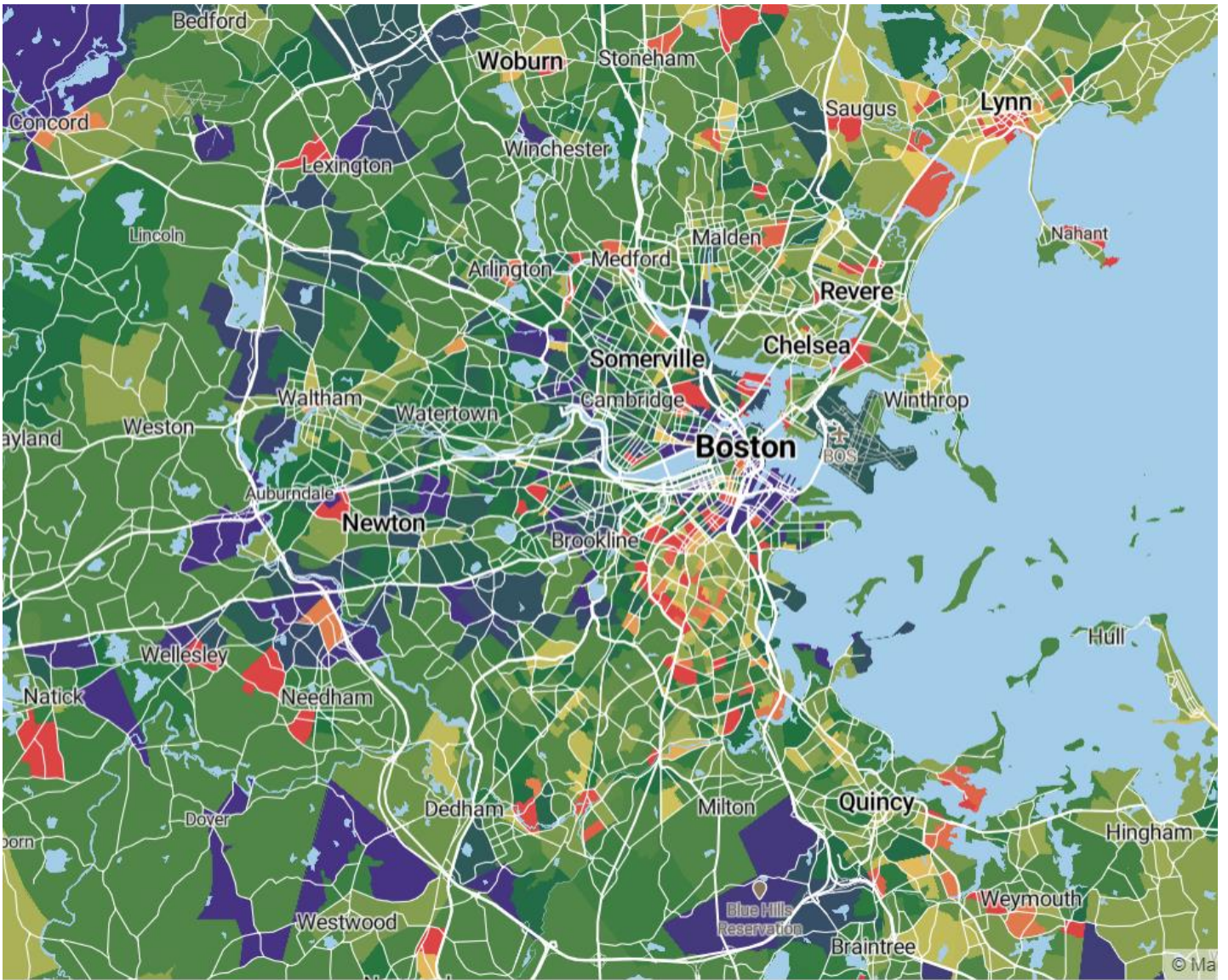
<u>Neighborhood</u>	<u>Nearest MBTA public transportation</u>	<u>Notes</u>
Allston-Brighton	Green line – B: St Paul St through Boston College	Many Boston University (BU) and Boston College (BC) students live in this neighborhood
Back Bay	Green line B, C, D: Arlington through Hynes Green line E: Arlington through Prudential Orange line: Back Bay	MGH-BWH shuttle runs every 15 minutes on weekdays and stops by the Prudential Center and Fenway
Beacon Hill	Green line: Park Street, Government Center Red line: Park Street, Charles/MGH	Walkable to MGH (<15 minutes)
Braintree	Red line: Braintree	>10 miles from MGH, but serviced by red line
Brookline	Green line C: St Mary's through Cleveland Circle Green line D: Longwood through Chestnut Hill	MGH-BWH shuttle runs every 15 minutes on weekdays and picks up from the Longwood medical area of this neighborhood
Cambridge	Red line: Kendall through Alewife Green line: Lechmere	East Cambridge and Kendall Square neighborhoods walkable to MGH (<20 minutes)
Charlestown	Orange line: Community College, Sullivan Square	MGH Charlestown Navy Yard shuttle runs every 15 minutes on weekdays and brings employees to/from MGH and Charlestown
Chelsea	Silver line 3	Also serviced by commuter rail station (North Station to Chelsea)
Downtown	Blue line: State Street, Aquarium Red line: Park Street through South Station Orange line: State Street through Tufts Medical Center	Walkable to MGH (<20 minutes)
Dorchester	Red line: JFK/UMass through Ashmont	
East Boston	Blue line: Maverick through Suffolk Downs	Logan Airport is located at Blue Line Airport Station
Fenway	Green line B, C, D: Kenmore Green line – D: Fenway	MGH-BWH shuttle runs every 15 minutes on weekdays and stops by the Prudential Center and Fenway Can get congested during Red Sox game days
Jamaica Plain	Orange line: Stony Brook through Forest Hills	
Malden	Orange line: Malden Center through Oak Grove	
Mattapan	Red line: Ashmont through Mattapan	
Medford	Green line extension: Ball Square through Medford/Tufts Orange line: Wellington	Many Tufts University students live in this neighborhood



Mission Hill	Green line E: Fenwood Rd through Heath St	Many Northeastern University students live in this neighborhood
North End	Blue line: Aquarium Green line: Haymarket, North Station Orange line: Haymarket, North Station	Walking distance (15 – 20 min, ~1 mile from MGH)
Quincy	Red line: North Quincy through Quincy Adams	>10 miles from MGH, but serviced by red line
Revere	Blue line: Revere Beach through Wonderland	
Roxbury	Orange line: Roxbury Crossing, Jackson Square	
Seaport	Red line: South Station Silver line 2	Marked as “midtown” on the neighborhood map below
Somerville	Green line extension: Union Square, East Somerville through Magoun Square Orange line: Assembly Square	
South Boston	Red line: Broadway through JFK/UMass	AKA “Southie” (not the same as South End) If not close to a T station, may need to use a combination of bus, T, bike, walking, etc to get to MGH
South End	Orange line: Back Bay, Tufts Medical Center, Mass Ave Silver line 4 and 5	Not to be confused with South Boston (“Southie”)
West End	Green line: Science Park/West End, North Station, Government Center Blue line: Bowdoin Orange line: North Station	Walkable to MGH (<10 minutes) Close to North Station, TD Garden







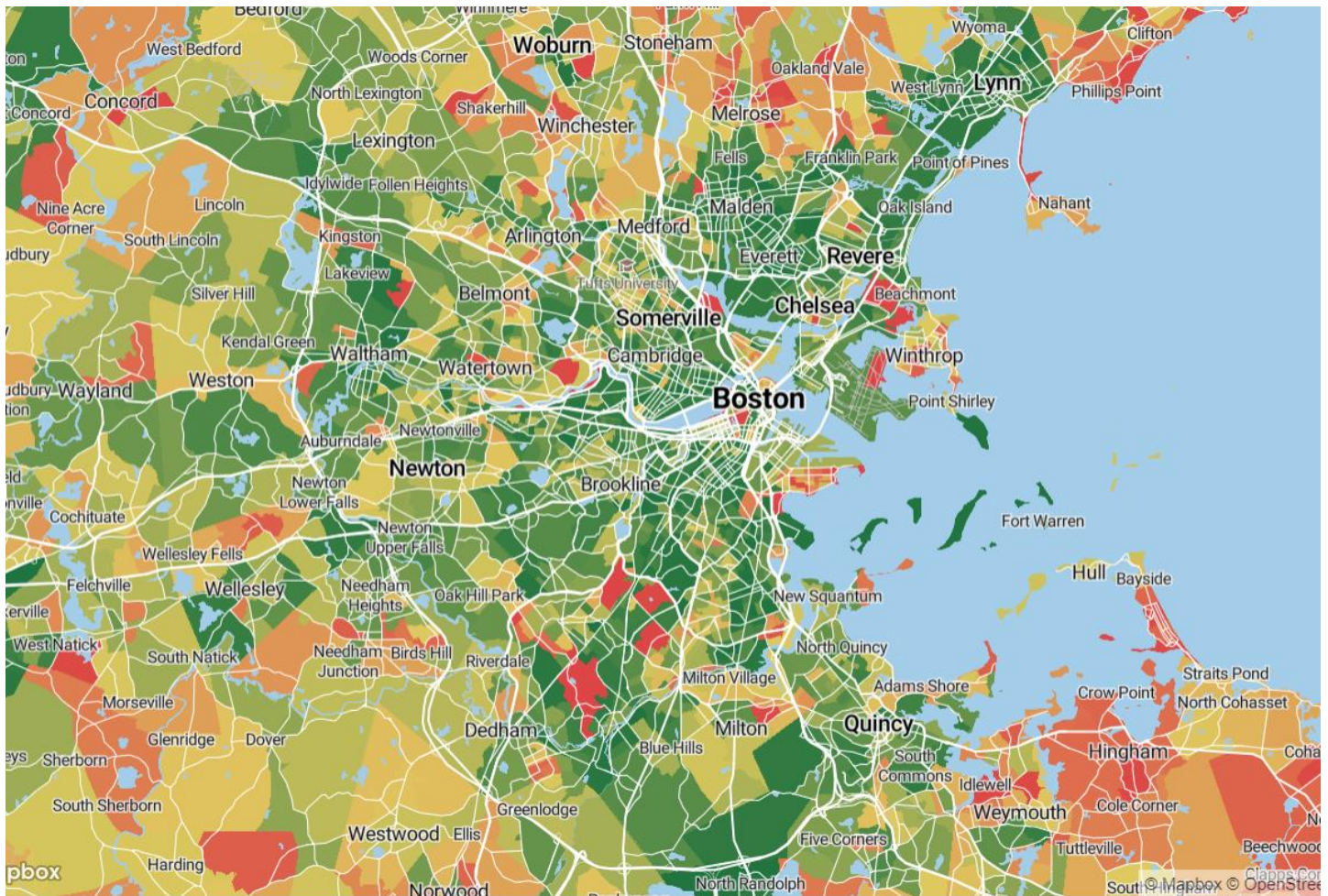
Rental Price Key



Diversity at MGH

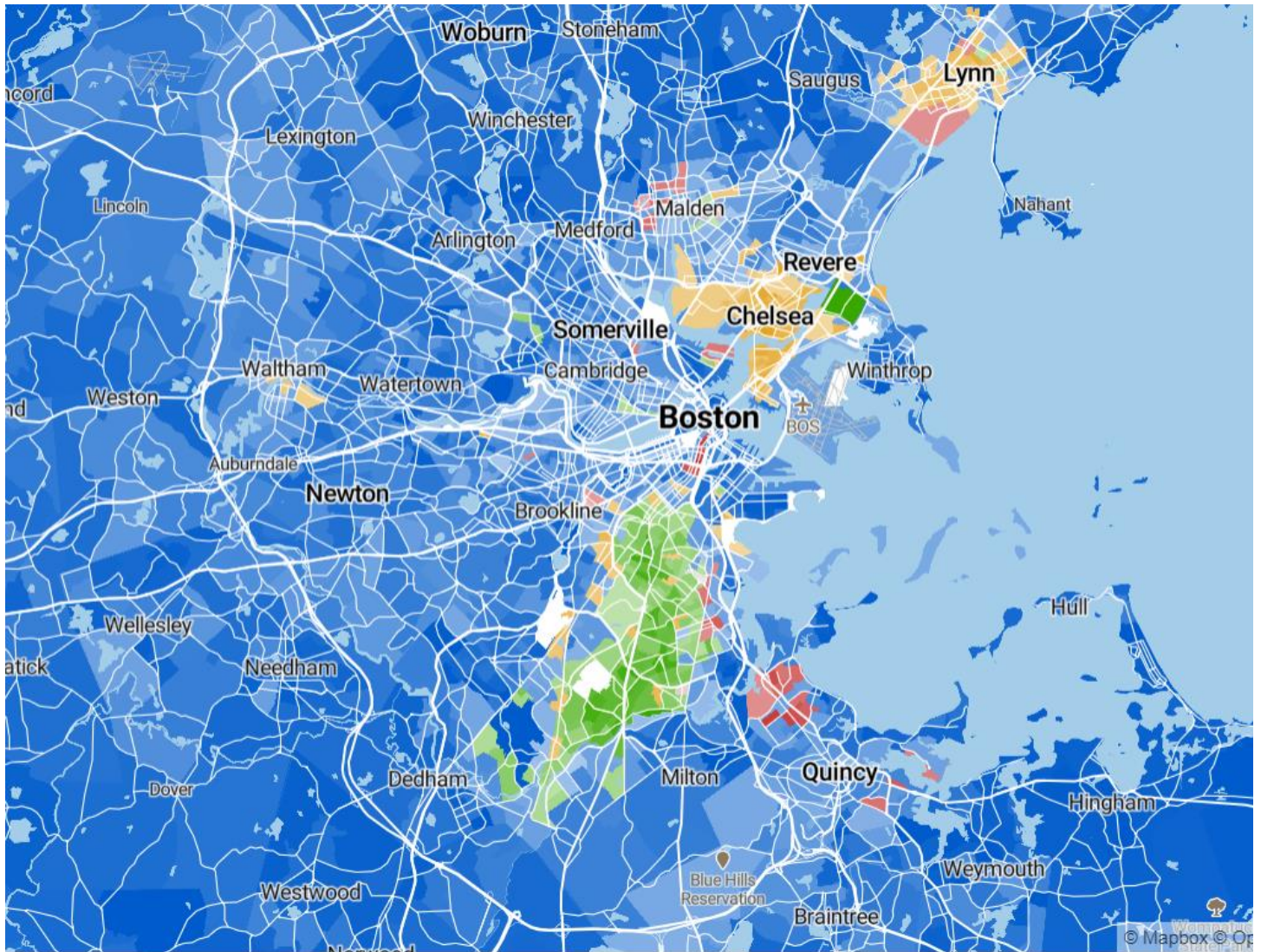
- Hospital-wide Collaborative Governance Diversity Committee
- MGH Pharmacy Equity and Inclusion Committee
- 340b designation
- Medical interpreter services – easily accessible to all patients and providers
- MGH Annual Report on Equity in Health Care Quality (<https://www.mghdisparitiessolutions.org/equity-in-health-care-quality>)

Diversity in Boston



Diversity Score



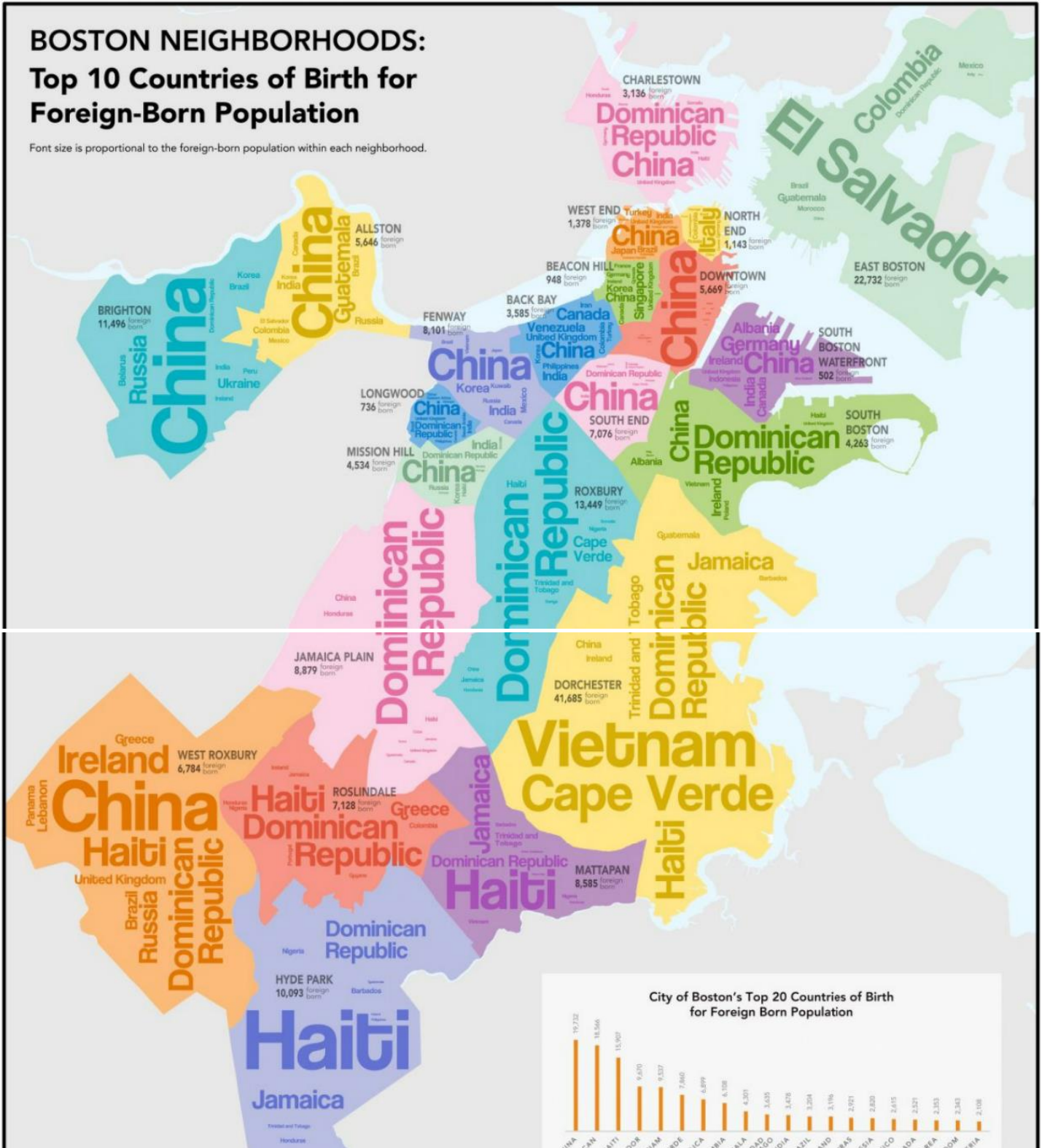


Majority Race Key

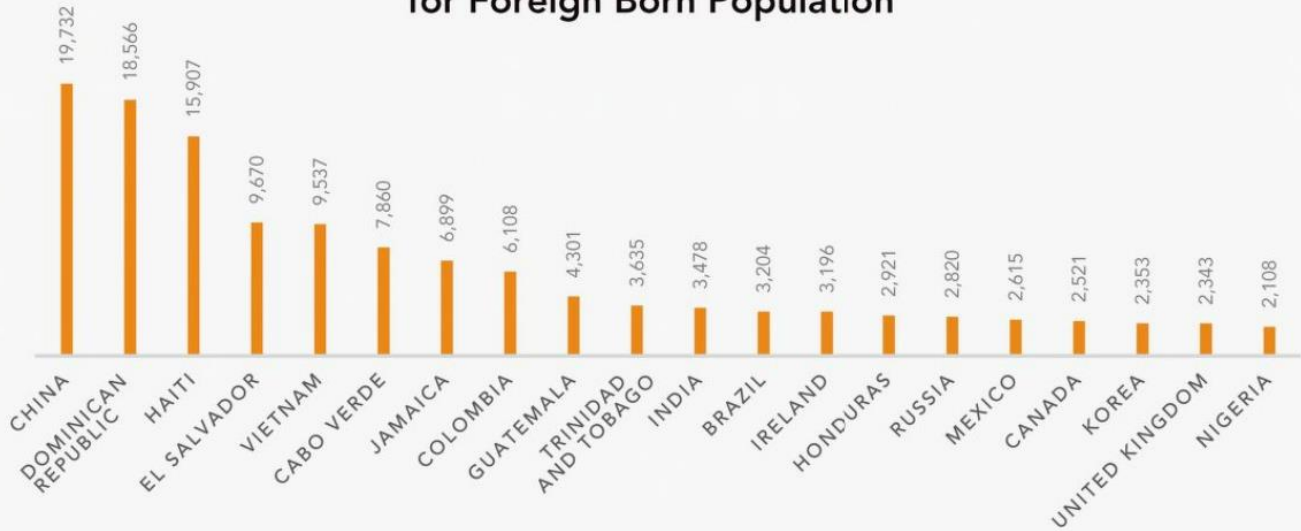


BOSTON NEIGHBORHOODS: Top 10 Countries of Birth for Foreign-Born Population

Font size is proportional to the foreign-born population within each neighborhood.



City of Boston's Top 20 Countries of Birth for Foreign Born Population



MGH Employee Perks

MGH offers a lot of discounts to employees

- To view all the discounts, go to: [Article Page - HR Service Portal \(service-now.com\)](https://www.mass.gov/info-details/article-page-hr-service-portal-service-now-com) or see MGH Perks Email sent out weekly
- You can pick up tickets at MGH Main Campus Employee Access Center, Assembly Row, and Charlestown Navy Yard (tickets can be deducted through payroll)

